

Kudos is the NDIS Partner in the Community providing the Early Childhood Approach. The Early Childhood Approach helps children younger than 6 years old with developmental concerns or developmental delays and children younger than 9 years old with a disability.

If you have concerns about your child's development, talking to a professional who knows your child best is a good place to start. This could be your child's doctor, early childhood educator or CAFHS health nurse.

After talking with your child's health or education professional Kudos can help connect you and your child to the right supports.



Kudos Services Early Childhood
1800 931 190 | kudos@ndis.gov.au

Locations

Level 1, 123 Greenhill Road, Unley SA, 5061
24 Gillingham Rd, Elizabeth SA, 5112



Refer to Kudos NDIS Early Childhood partner
kudosservices.com.au/ndia-ec/

DO YOU HAVE CONCERNS ABOUT YOUR CHILD'S DEVELOPMENT?



Delivering the NDIS in your community

NDIS EARLY CHILDHOOD APPROACH

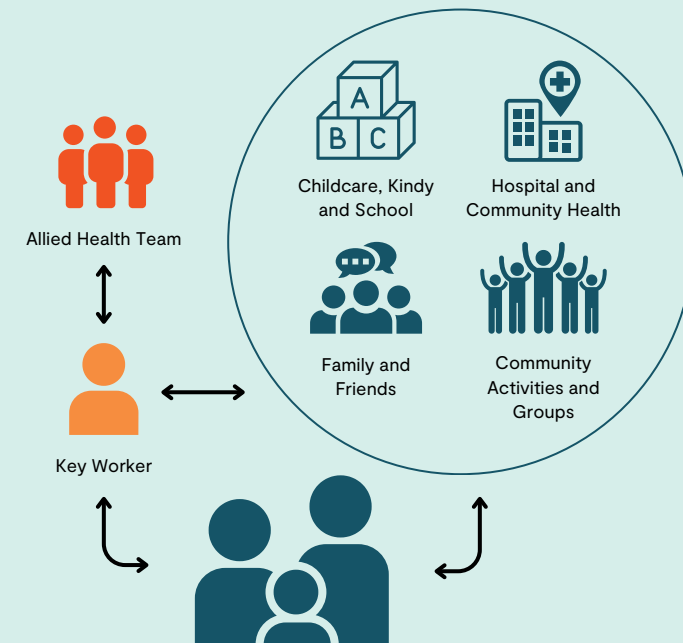
The NDIS Early Childhood Approach supports families to help children to develop the skills they need to take part in daily activities and achieve the best possible outcomes throughout their life.

Kudos' Early Childhood team consists of early intervention practitioners and coordinators with backgrounds in allied health, early education and family support. We are committed to working with you and your child to ensure your child meets their goals.

When you meet with us, we will:

- Get to know your child by speaking with you and the people who know your child well.
- Observe your child at home or in the community to see how they communicate, move, play, learn and interact with others.
- Complete questionnaires and screening tools to support our understanding of your child's development.
- Identify and connect you to community and mainstream services in your area.
- Provide you with practical information to assist you to support your child's development.
- Promote and support your child's meaningful participation in age-appropriate activities and experiences, with a focus on inclusion.

Families, of children with developmental concerns, will be supported through a key worker approach to identify goals and develop strategies to support their child's development.



If your child is eligible, we will support you to request access to the NDIS, help you to develop goals and connect to NDIS funded supports.